

EVIO Labs Medford (pka Kenevir Research)  
 540 East Vilas Road, Suite F, Central Point, OR 97502  
 541-668-7444 / OLCC 010-1001626980D / www.EVIOLabs.com

**500 MG Tincture**  
**Market Street LLC**  
*Info Only*



**Confident Cannabis ID:** 1905KR0064.1993

**Sample ID:** M190635-02

**Matrix:** Tincture

**METRC Batch #:**

**Sampling Method/SOP:** SOP.T.20.010

**Date Sampled:** 05/15/19 09:00

**Date Accepted:** 05/15/19

**Harvest/Process Lot ID:**

**Batch ID:**

**Batch Size (g):**

**Unit for Sale:**

**Harvest/Production Date:**

## Cannabinoid Analysis

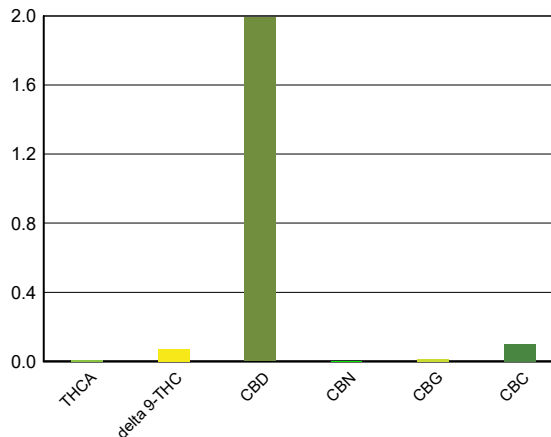
**FOR INFORMATIONAL USE ONLY - NOT FOR REGULATORY PURPOSES**

Date/Time Extracted: 05/16/19 13:51

Analysis Method/SOP: SOP.T.40.020

Date/Time Analyzed: 05/17/19 02:57

Cannabinoids	LOQ(%)	mg/g	% weight	Cannabinoid Profile
<b>Total THC</b> ((THCA*0.877)+Δ9THC)		<b>0.797</b>	<b>0.0797</b>	
<b>Total CBD</b> ((CBDA*0.877)+CBD)		<b>19.9</b>	<b>1.99</b>	
THCA	0.0100	< LOQ	< LOQ	
delta 9-THC	0.0100	0.744	0.0744	
delta 8-THC	0.0100	< LOQ	< LOQ	
CBDA	0.0100	< LOQ	< LOQ	
CBD	0.0100	19.9	1.99	
CBN	0.0100	< LOQ	< LOQ	
CBG	0.0100	0.136	0.0136	
CBC	0.0100	0.988	0.0988	
Sum of tested Cannabinoids	0.0100	21.9	2.19	



"Total THC" and "Total CBD" are calculated values and are an Oregon reporting requirement (OAR 333-064-0100). For Cannabinoid analysis, only delta 9-THC, THCA, CBD, CBDA are ORELAP accredited analytes. Cannabinoid values reported for plant matter are dry weight corrected; Oregon Water Activity action level is 0.65Aw and Oregon Moisture Content action level is 15%. Samples above limit will be highlighted RED; FD = Field Duplicate; LOQ = Limit of Quantitation.

Ian Riversong  
 Laboratory Director - 5/20/2019

EVIO Labs Medford (pka Kenevir Research)  
 540 East Vilas Road, Suite F, Central Point, OR 97502  
 541-668-7444 / OLCC 010-1001626980D / www.EVIOLabs.com

## Quality Control

**Batch: M19E068 - SOP.T.30.050 Prep for Cannabinoids**

Blank(M19E068-BLK1)			Extracted: 05/16/19 13:51		Analyzed: 05/17/19 00:55		
Analyte	Result	LOQ	Recovery Limits	Analyte	Result	LOQ	Recovery Limits
THCA	< LOQ	0.0100 (%)	< LOQ	delta 9-THC	< LOQ	0.0100 (%)	< LOQ
delta 8-THC	< LOQ	0.0100 (%)	< LOQ	CBDA	< LOQ	0.0100 (%)	< LOQ
CBD	< LOQ	0.0100 (%)	< LOQ	CBG	< LOQ	0.0100 (%)	< LOQ
CBN	< LOQ	0.0100 (%)	< LOQ	CBC	< LOQ	0.0100 (%)	< LOQ
Sum of tested Cannabinoid:	< LOQ	0.0100 (%)	< LOQ				

LCS(M19E068-BS1)			Extracted: 05/16/19 13:51		Analyzed: 05/17/19 01:12		
Analyte	% Recovery	LOQ	Recovery Limits	Analyte	% Recovery	LOQ	Recovery Limits
THCA	109	(%)	70-130	delta 9-THC	93.3	(%)	70-130
CBDA	99.7	(%)	70-130	CBD	96.9	(%)	70-130



Ian Riversong  
 Laboratory Director - 5/20/2019